

Common pests of beans

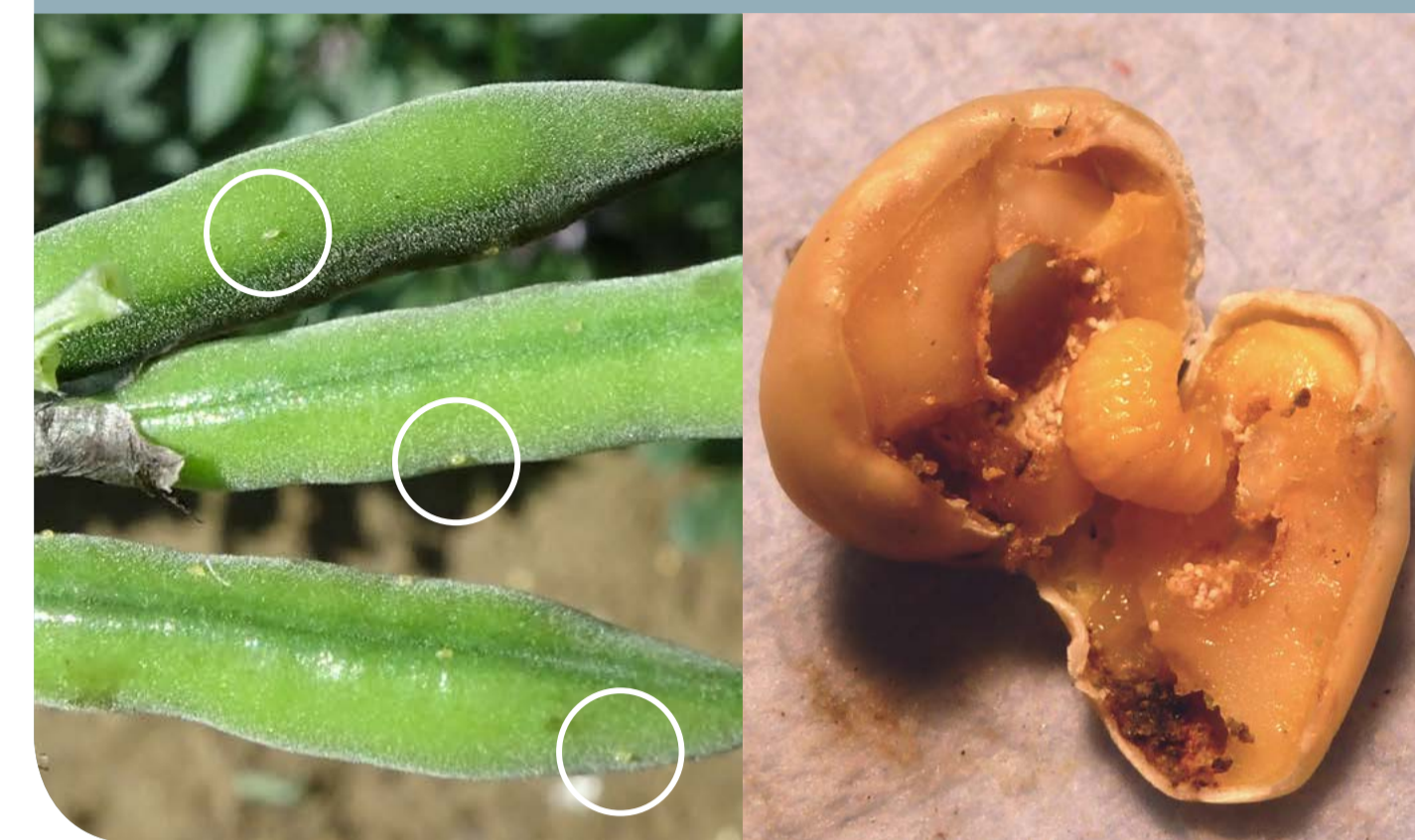
Bean seed fly GRB
Delia platura, Delia florilega



Black bean aphid GRB/BB
Aphis fabae



Bruchid beetle BB
Bruchus rufimanus



Capsid BB
Lygus spp. and others



Cutworm GRB
Agrotis spp.



Field thrips BB
Thrips angusticeps



Pea and bean weevil BB
Sitona lineatus



Pea aphid/Vetch aphid BB
Acyrtosiphon pisum, Megoura viciae



Slugs GRB/BB
Derocerus spp., Arion spp. and others



Stem nematode BB
Ditylenchus spp.

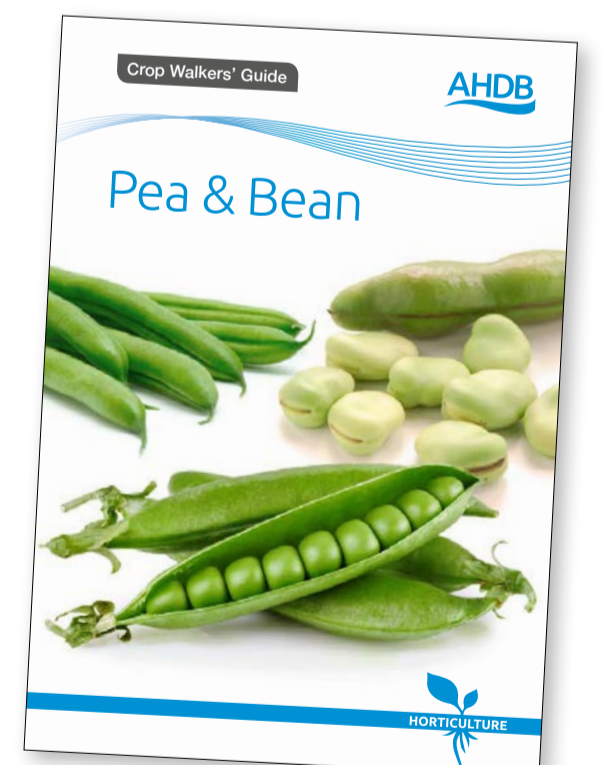


Two-spotted spider mite GRB
Tetranychus urticae



Check out AHDB's Pea and Bean Crop Walkers' Guide for full descriptions of all the common diseases of beans.

To access more information, you can download AHDB Crop Walkers' Guides and Nutrient Management Guides (RB209) from the Apple Store and Google Play Store.



Key
GRB Green & Runner Beans
BB Broad Beans

All images are courtesy and copyright of PGRO, except for: Cutworm, University of Warwick; Slugs, Gary Berron, USDA APHIS, Bugwood.org

While the Agriculture and Horticulture Development Board seeks to ensure that the information contained within this document is accurate at the time of printing, no warranty is given in respect thereof and, to the maximum extent permitted by law, the Agriculture and Horticulture Development Board accepts no liability for loss, damage or injury howsoever caused (including that caused by negligence) or suffered directly or indirectly in relation to information and opinions contained in or omitted from this document. Reference herein to trade names and proprietary products without stating that they are protected does not imply that they may be regarded as unprotected and thus free for general use. No endorsement of named products is intended, nor is any criticism implied of other alternative but unnamed products.

© Agriculture and Horticulture Development Board 2018. All rights reserved.

Produced for you by:

AHDB Horticulture, Stoneleigh Park, Kenilworth, Warwickshire, CV8 2TL

If you no longer wish to receive this information, please email us on comms@ahdb.org.uk

T 024 7669 2051
E comms@ahdb.org.uk
W horticulture.ahdb.org.uk
@AHDB_Hort