

SOYBEAN

MARKETS IN THE EUROPEAN UNION ¹

Annual key figures • Average 2017/2018 – 2019/2020



940 000 ha

ha = hectares ; t = tons ; Mt = millions tons

2.7 Mt

of beans produced

219 000 t

of beans exported²

14.9 Mt

of beans imported²

18.4 Mt

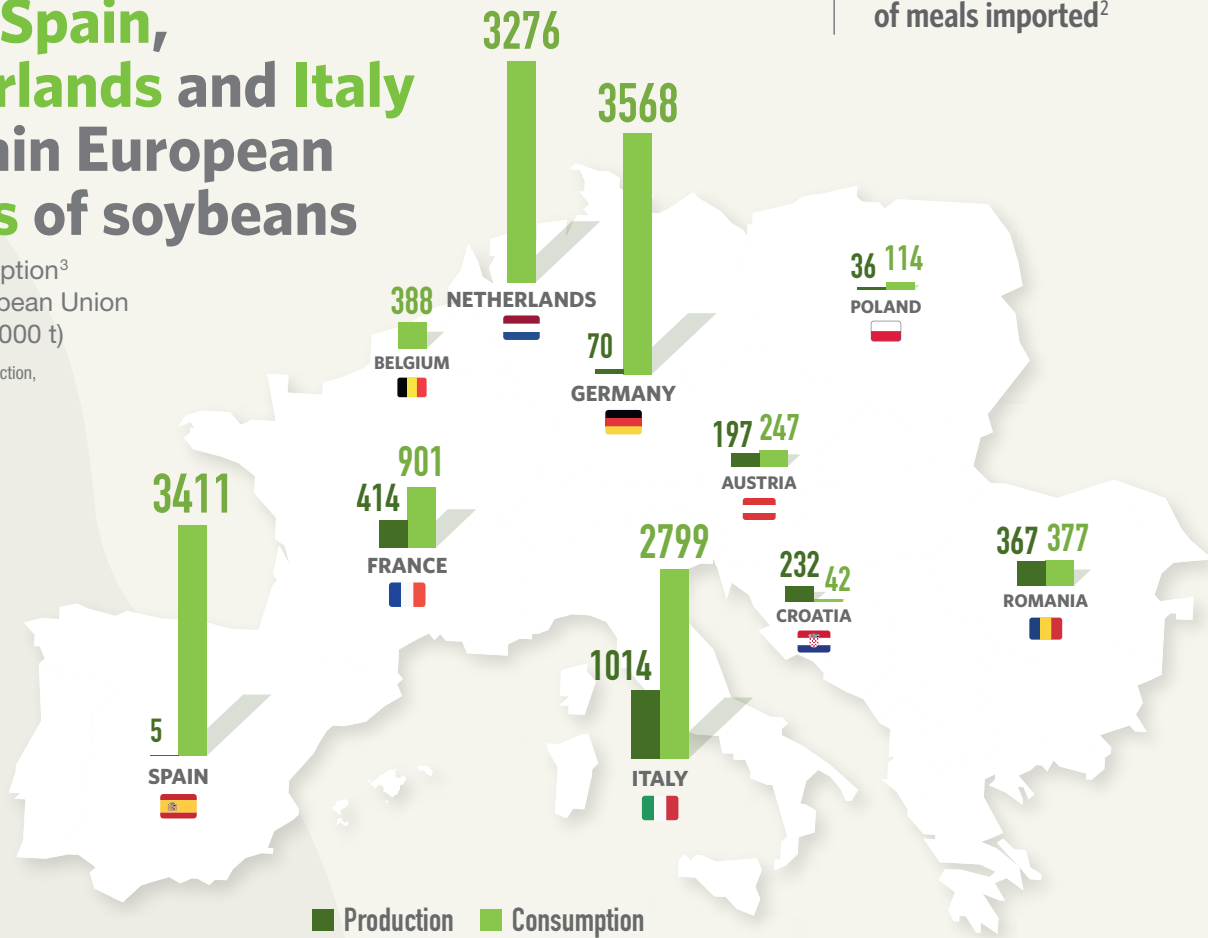
of meals imported²

Germany, Spain, the Netherlands and Italy are the main European consumers of soybeans

Production and consumption³ of soybeans in the European Union

• Average 2017-2019 (1000 t)

Source: Terres Univia with Eurostat (production, calculation of consumption)

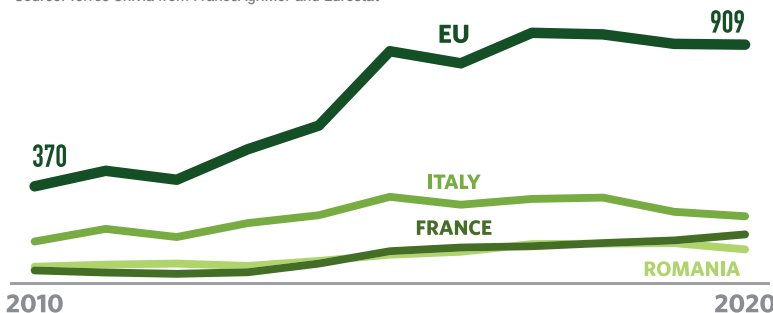


European surfaces

of soybeans have more than doubled between 2010 et 2020

Surfaces of soybeans in the European Union • 2010-2020 (1000 ha)

Source: Terres Univia from FranceAgriMer and Eurostat



Soybeans are used as



Feed
(meals)



Food
(soyfoods)



Non-feed and food
(biofuel)

Crushing is a process that results in meals used as feed and oil that is used as biofuel, feed, and food. Most soybeans are crushed in the European Union.

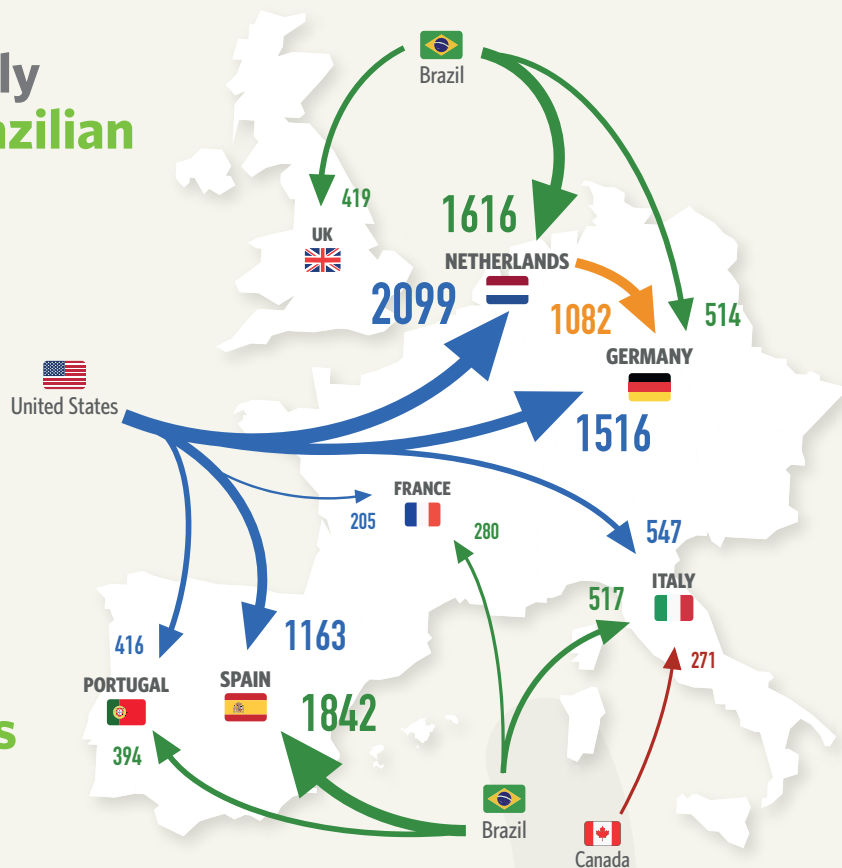
¹ EU-28 ² Outside the European Union ³ Production + imports - exports

The European Union mainly imports American and Brazilian soybeans

Main trade flows of soybeans in the European Union

• Average 2017/18-2019/20 (1000 t)

Source: Terres Univia from Eurostat

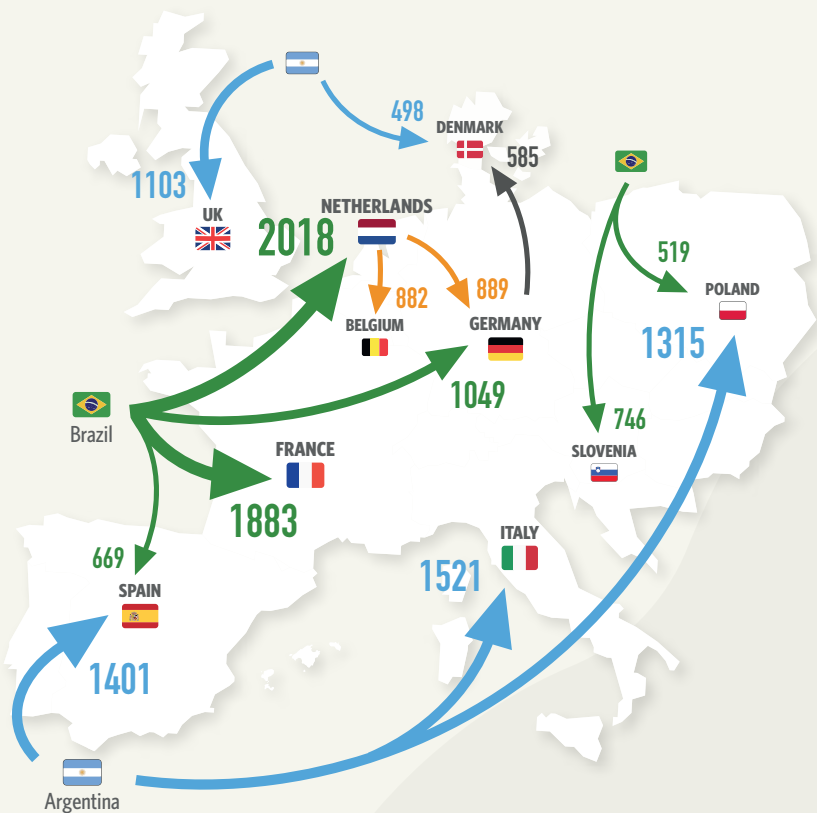


The European Union mainly imports Brazilian and Argentinian soy meals

Main trade flows of soy meals

• Average 2017/18-2019/20 (1000 t)

Source: Terres Univia from Eurostat



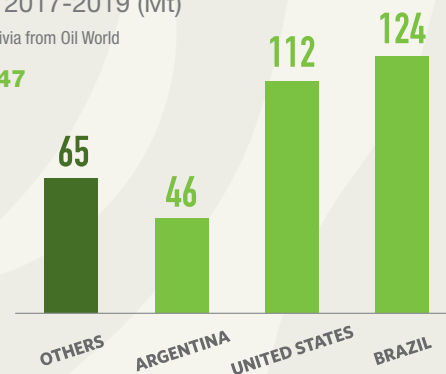
World production of soybeans is mainly located in North and South America

Global production of soybeans

• Average 2017-2019 (Mt)

Source: Terres Univia from Oil World

World = 347



This document was made by Terres Univia with the help of Fachhochschule Südwestfalen (FH-SWF) University. It is part of the project LegValue that has received funding from the European Union's Horizon 2020 research and innovation program under grant agreement n°727672.

Terres Univia
 11 rue de Monceau – CS 60003 – 75378
 Paris cedex 08 • Tel.: 01.58.12.13.40
contact@terresunivia.fr • www.terresunivia.fr

LegValue
www.legvalue.eu